



SFT Ritam *Sans*

Specimen / User manual

Vibrant Energy of SFT Ritam Sans.

Concept. Inspired by the dynamic spirit of Belgrade, SFT Ritam Sans captures the free and relaxed atmosphere of this vibrant city. Unlike typical typographic inspirations, this font draws from the city's lively streets, its spontaneous energy, and the organic flow of life. The result is a neo-grotesque typeface infused with subtle humanist touches, where every curve and line reflects the fluidity and vibrancy of the city's essence.

Graphics. SFT Ritam Sans is defined by its fluid and lively forms, where each character conveys a sense of movement and energy. The rounded shapes and smooth transitions between strokes create a harmonious rhythm, akin to the unhurried pace of Belgrade's daily life. These humanistic elements add warmth and approachability to the otherwise clean and modern neo-grotesque structure.

Family. The SFT Ritam Sans family is available in **8 weights**, each with corresponding **8 oblique styles**, offering great flexibility for diverse design applications. What truly sets this typeface apart is the inclusion of 8 true italics, designed to bring an added layer of expressiveness and character. These italics go beyond traditional slanted styles, making SFT Ritam Sans a standout choice for designers seeking both functionality and flair.

Instruction →
on pages
6–7

Features: Access all alternates (aalt), Glyph composition (ccmp), Localized forms (locl), Subscript (subs), Inferiors (sinf), Superscript (sups), Numerators (numr), Denominators (dnom), Fractions (frac), Ordinals (ordn), Lining figures (lnum), Proportional figures (pnum), Tabular figures (tnum), Oldstyle figures (onum), Case-sensitive forms (case), Slashed zero (zero), Contextual alternates (calt).

Instruction →
on page 5

Stylistic sets: Two-storey a (ss01), Two-storey g (ss02), Single-storey a (ss03), Serifed I [i] (ss04), Hooked l [el] (ss05), alt. Ampersand (ss06), Bashkir localization (ss12), Chuvash localization (ss13) Bulgarian Cyrillic (ss14), Serbian Cyrillic (ss15), Romanian comma accent (ss16), Dutch IJ (ss17), Catalan Ldot (ss18), Circled figures (ss19), Black circled figures (ss20).

First published: 11.2024.

Designer: Yulia Gonina.

Contributors:

Kirill Maslow (mastering),
Alena Linnask (graphic design).

Glyphs count: 1005/993.

Styles count: 8 upright, 8
oblique, 8 italic styles
+ 2 variable fonts.



Instruction on page 8

Character →
set on pages
15–18

SFT Ritam Sans contains 200+ Latin and 60+ Cyrillic languages. Moreover, we try to support every local language feature we know.

*If you have suggestions about adding local features and glyphs, please feel free to contact us at **info@schrifteria.xyz**.

Languages

Latin: Abenaki, Afaan-Oromo, Afar, Afrikaans, Albanian, Alsatian, Amis, Anuta, Aragonese, Aranese-Aromanian, Arrernte, Arvanitic (Latin), Asturian, Atayal, Aymara, Azerbaijani, Bashkir-(Latin), Basque, Belarusian (Latin), Bemba, Bikol, Bislama, Bosnian, Breton, Cape-Verdean-Creole, Catalan, Cebuano, Chamorro, Chavacano, Chichewa, Chickasaw, Cimbrian, Cofán, Cornish, Corsican, Creek, Crimean Tatar (Latin), Croatian, Czech, Danish, Dawan, Delaware, Dholuo, Drehu, Dutch, English, Esperanto, Estonian, Faroese, Fijian, Filipino, Finnish, Folkspraak, French, Frisian, Friulian, Gagauz (Latin), Galician, Ganda, Genoese, German, Gikuyu, Gooniyandi, Greenlandic (Kalaallisut), Guadeloupean-Creole, Gwich'in, Haitian-Creole, Hän, Hawaiian, Hiligaynon, Hopi, Hotçak (Latin), Hungarian, Icelandic, Ido, Igbo, Ilocano, Indonesian, Interglossa, Interlingua, Irish, Istro-Romanian, Italian, Jamaican, Javanese-(Latin), Jèrriais, Kaingang, Kala-Lagaw-Ya, Kapampangan (Latin), Kaqchikel, Karakalpak-(Latin), Karelian (Latin), Kashubian, Kikongo, Kinyarwanda, Kiribati, Kirundi, Klingon, Kurdish-(Latin), Ladinlatinlatino-sine-Flexione, Latvian, Lithuanian, Lojban, Lombard, Low-Saxon, Luxembourgish, Maasai, Makhuwa, Malay, Maltese, Manx, Māori, Marquesan, Megleno-Romanian, Meriam-Mir, Mirandese, Mohawk, Moldovan, Montagnais, Montenegrin, Murrinh-Patha, Nagamese-Creole, Nahuatl, Ndebele, Neapolitan, Ngayambaa, Niuean, Noongar, Norwegian, Novial, Occidental, Occitan, Onëipöt, Oshiwambo, Ossetian (Latin), Palauan, Papiamentu, Piedmontese, Polish, Portuguese, Potawatomi, Q'eqchi', Quechua, Rarotongan, Romanian, Romansh, Rotokas, Sami-(Inari-Sami), Sami (Lule-Sami), Sami (Northern-Sami), Sami (Southern-Sami), Samoan, Sango, Saramaccan, Sardinian, Scottish-Gaelic, Serbian-(Latin), Seri, Seychellois-Creole, Shawnee, Shona, Sicilian, Silesian, Slovak, Slovenian, Slovio-(Latin), Somali, Sorbian (Lower-Sorbian), Sorbian (Upper-Sorbian), Sotho (Northern), Sotho-(Southern), Spanish, Sranan, Sundanese (Latin), Swahili, Swazi, Swedish, Tagalog, Tahitian, Tetum, Tok-Pisin, Tokelauan, Tongan, Tshiluba, Tsonga, Tswana, Tumbuka, Turkish, Turkmen-(Latin), Tuvaluan, Tzotzil, Uzbek (Latin), Venetian, Vepsian, Volapük, Võro, Wallisian, Walloon, Waray-Waray, Warlpiri, Wayuu, Welsh, Wik-Mungkan, Wiradjuri, Wolof, Xavante, Xhosa, Yapese, Yindjibarndi, Zapotec, Zarma, Zazaki, Zulu, Zuni.

Cyrillic: Adyghe, Akhvakh, Aleut (Cyrillic), Altaic, Andi, Archi, Avar, Bashkir, Belarusian (Cyrillic), Besermyan, Bosnian (Cyrillic), Bulgarian (Cyrillic), Buryat, Chechen (Cyrillic), Chukchi, Chulym, Chuvash, Dargwa, Dungan, Enets, Even (Lamut), Gagauz, Godoberi, Ingush, Kabardino-Cherkess, Karaim, Karakalpak, Karata (Karata-Tukita), Karelian, Kazakh (Cyrillic), Ket, Kildin Sámi, Kirghiz, Komi-Zyrian, Koryak, Kumyk, Lak, Lezgian, Macedonian, Moldavian (Cyrillic), Mongolian, Mordvin-moksha, Nanai, Nganasan, Oroch, Ossetian, Russian, Rusyn, Saami, Serbian (Cyrillic), Soyot-Tsaatan, Tabasaran, Tadjik, Tatar Volgaic, Tindi, Touva, Tsez, Turkmen (Cyrillic), Udege, Udmurt, Uighur (Cyrillic), Ukrainian, Ulch, Uzbek (Cyrillic), Veps, Yukagir.

Upright

ExtraLight

Light

Regular

Medium

DemiBold

Bold

ExtraBold

Black

Oblique

ExtraLight Oblique

Light Oblique

Oblique

Medium Oblique

DemiBold Oblique

Bold Oblique

ExtraBold Oblique

Black Oblique

Italic

ExtraLight Italic

Light Italic

Italic

Medium Italic

DemiBold Italic

Bold Italic

ExtraBold Italic

Black Italic

Default set

Rhythm moves the city, *shaping its pulse & flow.*

Two-storey a (ss01) *Italic only*

A steady cadence guides each step forward.

Two-storey g (ss02)

Everything clicks into place, moving like clockwork.

Single-storey a (ss03) *Roman only*

Progress is made in the smallest steps.

Serifed I [i] (ss04)

EVERYTHING MOVES IN SYNC & HARMONY.

Hooked l [el] (ss05)

Momentum builds slowly, but steadily.

alt. Ampersand (ss06) *Italic only*

A city never rests, it breathes & moves with us.

Circled Figures (ss19)

① Movement is constant,

Black circled figures (ss20)

② Even when we pause.

OpenType Features

OT Feature	How to use	What it does
Glyph composition (ccmp)	It works when you type a letter and then a combining mark.	A + ° = Å
Localized forms (locl) *duplicated in stylistic sets	It works when you choose a language for a text. If your graphic editor doesn't support a language you need, you can access this feature through the stylistic set.	Български → Български Србин → Србин TÜRKİYE → TÜRKİYE Poștal → Poștal RIJK → RIJK Cel·la → Cel·la
Subscript (subs)/ Superscript (sup), Numerators (numr), Denominators (dnom)	Turn on the OT feature with the appropriate name. It works with numbers and basic Latin letters (subscript and superscript)	1S → H _{1S} 1S → H ^{1S} 1 → H ¹ 1 → H ₁
Ordinals (ordn)	Turn on the OT feature with the appropriate name. It works only for a, o and No.	2a → 2 ^a 1o → 1 ^o No. → N ^o
Fractions (frac)	Write a sequence of numbers, slash, numbers, and apply the Fractions feature.	3 + / + 5 = ³ / ₅ 1 + / + 7 = ¹ / ₇ 54 + / + 82 = ⁵⁴ / ₈₂
Tabular figures (tnum)	Turn on the OT feature with the appropriate name. Works for numbers and currencies.	0123 → 0123 \$wℓ → \$wℓ
Oldstyle figures (onum)	Turn on the OT feature with the appropriate name. Works for numbers and currencies.	0123 → 0123 \$wℓ → \$wℓ

OpenType Features

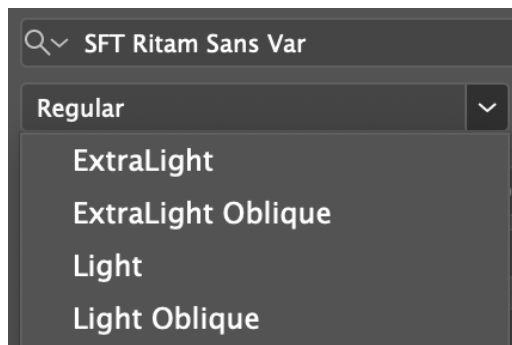
OT Feature	How to use	What it does
Case-sensitive forms (case)	It works when you set a text with All Caps enabled.	$\text{H}\llcorner([\{\text{---}\cdot\grave{\text{z}}\text{i@}\}])\gg\text{H}$ <div style="text-align: center;">↓</div> $\text{H}\llcorner([\{\text{---}\cdot\grave{\text{z}}\text{i@}\}])\gg\text{H}$
Slashed zero (zero)	Turn on the OT feature with the appropriate name. Works for Lining, Old-Style and Tabular zeros.	$\text{O} \rightarrow \text{Ø}$ $\text{o} \rightarrow \text{ø}$
Contextual alternates (calt)	Contextual alternates are enabled by default. We suggest keeping it enabled. It automatically changes the letter shapes so that they don't intersect.	$\text{O}:\text{O} \rightarrow \text{O}:\text{O}$ $\text{ft} \rightarrow \text{ft}$ $\text{---} \rightarrow \text{—}$ $\text{--} \rightarrow \text{–}$

Variable Font

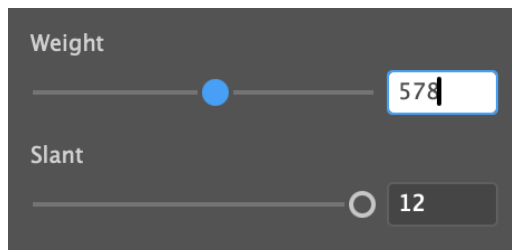
How to Use

SFT Ritam Sans Var is the variable version of SFT Ritam Sans. It includes Upright and Oblique styles in the Roman font file, and Italic styles in the Italic font file. You can adjust the **weight** and **slant** in two ways:

1. Choosing a style name in a regular manner.



2. Using sliders to get intermediate values.



Support

To use variable fonts in web please consult following articles:

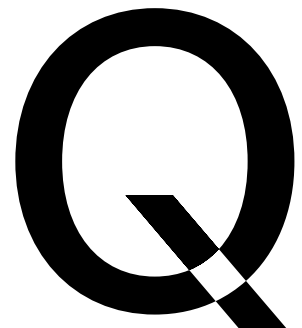
[Get started with variable fonts](#) by Richard Rutter;

[How to use variable fonts in the real world](#) by Richard Rutter.

Check variable fonts support here <https://v-fonts.com/support>

ATTENTION!

Variable fonts are still a developing technology, so there may be issues with displaying and printing variable fonts (an example of such an issue is shown in the illustration). Before printing, we recommend breaking down the font into outlines and merging them to avoid such intersections.



SCHRIFTERIA FOUNDRY IS NOT RESPONSIBLE FOR ANY POSSIBLE CONSEQUENCES OF USING VARIABLE FONTS IN YOUR LAYOUTS.

Black Italic
44pt

English

Cities are living organisms, constantly evolving with every new building, street, and park.

DemiBold
40pt

Swedish

Städer är i ständig förändring, där nya byggnader, parker och gator ständigt formar dess karaktär. I vissa områ-

ExtraLight Oblique
36pt

Polish

Miasta są dynamicznymi organizmami, które nieustannie się zmieniają wraz z każdą nową budowlą, ulicą czy parkiem. W niektórych dziel-

Black
34pt

Turkish

Şehirler, her yeni bina, sokak ve park ile sürekli olarak değişen yaşayan organizmalar gibidir. Bazi

Bold Italic
31pt

French

Les villes sont des organismes vivants, en constante évolution avec chaque nouveau bâtiment, rue ou parc. Dans certains quartiers, des gratte-

Medium Oblique
28pt

Icelandic

Borgir eru lifandi fyrirbæri sem breytast stöðugt með hverri nýrri byggingu, götu og almenningsgarði. Í sumum hverfum rísa nútímalegir skýjakljúfar upp yfir iðandi götum,

ExtraLight
24pt

Dutch

Steden zijn levende organismen die voortdurend in ontwikkeling zijn met elke nieuwe straat, gebouw of park. In sommige wijken torenen moderne wolkenkrabbers boven drukke straten uit, terwijl andere buurten

Black
22pt

Croatian

Gradovi su živi organizmi koji se neprestano mijenjaju s novim zgradama, ulicama i parkovima. U nekim dijelovima grada moderni neboderi dominiraju užurbanim

ExtraBold Italic
20pt

Spanish

Las ciudades son organismos vivos que evolucionan constantemente con cada nuevo edificio, calle o parque. En algunas áreas, los rascacielos modernos se alzan sobre calles

Bold Oblique
18pt

Portuguese

As cidades são organismos vivos, em constante evolução com cada novo edifício, rua ou parque. Em algumas áreas, arranha-céus modernos se erguem sobre ruas movimentadas, enquanto em outras, bair-

DemiBold
16pt

Romanian

Orașele sunt organisme vii, care evoluează constant odată cu fiecare nouă clădire, stradă sau parc. În unele zone, zgârie-norii moderni se înalță deasupra străzilor aglomerate, în timp ce în altele, cartierele liniștite păstrează un ritm de viață

Medium
14pt

Finnish

Kaupungit ovat eläviä organismeja, jotka muuttuvat jatkuvasti uusien rakennusten, katujen ja puistojen myötä. Joillakin alueilla modernit pilvenpiirtäjät kohoavat vilkkaiden katujen yläpuolella, kun taas toiset kaupunginosat tarjoavat rauhallisemman ja rennomman ilmapiirin. Joukkoliikenne, viheralueet

Mestá sú živé organizmy, ktoré sa neustále menia s každou novou budovou, ulicou alebo parkom. V niektorých štvrtiach sa týčia moderné mrakodrapy nad rušnými ulicami, zatiaľ čo iné časti mesta ponúkajú pokojnejšie a pomalšie tempo života. Verejná doprava, zelené plochy a chodníky pri-

Regular
12pt

Slovak →

Light
10pt

Slovenian

Mesta so živi organizmi, ki se nenehno spreminjajo z vsako novo stavbo, ulico ali parkom. V nekaterih delih mesta se nad živahnimi ulicami dvigajo sodobni nebotačniki, medtem ko druga območja ponujajo bolj umirjen in počasnejši ritem življenja. Javni prevoz, zelene površine in sprehajalne ulice oblikujejo mestni ritem, kjer sta gibanje in povezovanje ključna elementa vsakdanjega življenja. Vsak kotiček mesta ima svojo edinstveno energijo, ki jo določajo ljudje, infrastruktura in narava. Z vedno večjo skrbjo za trajnost postajajo urbana središča tudi bolj ze-

A városok élő organizmusok, amelyek folyamatosan változnak minden új épülettel, utcával és parkkal. Egyes kerületekben modern felhőkarcolók emelkednek a nyugsgó utcák fölé, míg más területek nyugodtabb, lassabb életritmust kínálnak. A közösségi közlekedés, zöldterületek és a sétálóutcák mind hozzájárulnak a város ritmusához, amely helyet ad a mozgásnak és a kapcsolódásnak a mindennapokban. Minden városrész egyedi energiát áraszt, amelyet az ott élő emberek, az épített környezet és a természet alakítanak. Az egyre nagyobb figyelem a fenntarthatóságra zöldebb és élhetőbb városi környezetet

ExtraLight
8pt

Hungarian →

Black
44pt

Russian

**В некоторых райо-
нах современные
небоскрёбы возвы-
шаются над ожив-
лёнными улицами,**

DemiBold Oblique
40pt

Bulgarian

***Градовете са живи ор-
ганизми, които непре-
къснато се променят
с всяка нова сграда,
улица или парк. В ня-***

ExtraLight Italic
36pt

Serbian

*Сваки део града носи своју
јединствѣну енерѣију, коју
стварају људи, архиѣек-
ѣура и ѣприрода. Са све
већим наѣласком на одр-*

Black
34pt

Ukrainian

**Громадський транспорт,
зелені зони та пішохідні
вулиці формують пульс
міста, роблячи його міс-**

Bold Italic
31pt

Tatar

***Кайбер районнарта заман-
ча куккә ашкан биналар
кайнап торган урамнар
өстендә калка, ә баш-
ка урыннарта тормыш-***

Medium Oblique
28pt

Belorussian

***Грамадскі транспарт, зялёныя
зоны і пешаходныя вуліцы фар-
міруюць пульс горада, робячы яго
месцам, дзе рух і сувязі з'яўля-
юцца ключавымі элементамі***

ExtraLight
24pt

Mongolian

Нийтийн тээвэр, ногоон байгууламж,
явган хүний гудамжнууд нь хотын хэмн-
элийг тодорхойлж, хөдөлгөөн, холбоо
нь өдөр тутмын амьдралын чухал эле-
ментүүд болдог. Хотын бүс бүр өөрийн

Black
22pt

Kazakh

**Тұрақты дамуға деген назардың ар-
туымен, қалалық кеңістіктер көгалдан-
дырылып, өмір сүруге қолайлы бола
түсуде. Қалалар жаңа талаптарға бей-**

ExtraBold Italic
20pt

Bashkir

**Йәмәғәт транспорты, йәшел зоналар һәм
йәйәүле урамдар каланың тизлеген бил-
дәләй, уны хәрәкәт һәм бәйләнеш көндәлек
тормоштоң төп элементтары иткән**

Bold Oblique
18pt

Udmurt

**Ке ужанъёс кутскем яратон воркалъясъёс вуэ кор-
ка адзъяла, а вань ужанъёс гинэ ужшор лэсьён да
пöлым кутскем улонлы. Пижъянлэн транспорт,
чечысе ульсьёсты да ужшор корка ульсьёсты**

DemiBold
16pt

Avar

**Халкъан транспорт, зелёный къаранал ва бецил гъанза-
шал улициал гъуреб унчлади ритм ялиб, къваре гъебугъеб
гъана йиццуда хин ижарулаьрда къарабжиб гъебизе.
Хьин къаранал гъуреб кванеб гъебгелизе уникал паттерн,**

Medium
14pt

Kirghiz

**Шаардын ар бир бурчунда өзгөчө
атмосфера бар, ал адамдар, архи-
тектура жана табият аркылуу жара-
лат. Туруктуулукка көңүл бурулуп,
шаардык мейкиндиктер жашылдан-
дырылып, жашоого ыңгайлуу болуп
бара жатат. Шаарлар жаңы муктаж-
дыктарга ыңгайлашып, өз тарыхын**

**Зарим һуурин газарта, оршон
үеын үндэр байшангууд дуу
дуулажа байһан гудамжанууда
дээрэһээ үндэрлэдэг, харин
нүгөө газарануудта, ажаһуудал
удаан, тайбан хэмнэлтэй байдаг.
Ниигэмэй тээбэри, ногоон тал-
май болон ябадаг зонуудай гу-
дамжанууд хотоноо шэмэглэдэг,**

Regular
12pt

Buryat →

**Шәәрсем — аслам тәнчи организмсем, сәнә пур-
нәс кушак, урампа парксем тухсан пуслаләх. Хәр
районәнчи саван саван төпсөкәсем пурнәс урам-
семән каваканла хумаланатә, сук кәскән урамсәррах
ял таватән вәхәратәп хумлана сүхән юратәпласа
пек таватәп ултапан. Ялтән транспорт, ял-әсемпе
сүләкәмләх урамсем шәәрне вәйнә пулсән ярасачә,
кәртмешәле пәрле хәр уләшкән кушакләх сүнә пәр
тәсәллә пурәна. Шәәрне хәр кунатә сүраләх пулсә,
кәрлә кәшәсем, архитектурапа сәлтәрән таватән пек**

**Шахрҳо организмҳои зиндае ҳастанд, ки бо ҳар як
бино, кӯча ва боғи нав пайваста тағйир меёбанд.
Дар баъзе ноҳияҳо, биноҳои баландошӯнаи муо-
сир аз болои кӯчаҳои серодам баланд мешаванд,
дар ҳоле ки дигар қисматҳои шаҳр бо зиндагии
оромтар ва сустарав ритми худро доранд. Нақли-
ёти ҷамъиятӣ, майдонҳои сабз ва кӯчаҳои пиёда-
гард ритми зиндагии шаҳрро ташкил медиҳанд ва
шаҳрро ба маконе табдил медиҳанд, ки ҳаракат
ва пайвастагӣ унсурҳои асосии ҳаёти рӯзмарра
мешаванд. Ҳар гӯшаи шаҳр бо энергияи хоси
худ фарқ мекунад, ки онро одамон, меъморӣ ва**

Light
10pt

Chuvash

ExtraLight
8pt

Tadzhik →

[illegible]

Character Set | Roman

Glyphs

[illegible]

SFT Ritam Sans 17 | 19

Character Set | Italic

Glyphs

Arrows	↑ ↗ → ↘ ↓ ↙ ← ↖ ↔ ⇅
Ordinals	H ^{α o}
Superscripts	H ^{0 1 2 3 4 5 6 7 8 9 a b c d e é è f g h i j k l m n o p q r s t u v w x y z}
Numerators	H ^{0 1 2 3 4 5 6 7 8 9}
Denominators	H _{0 1 2 3 4 5 6 7 8 9}
Subscripts	H _{0 1 2 3 4 5 6 7 8 9 a b c d e é è f g h i j k l m n o p q r s t u v w x y z}
Fractions	/ 1/ 1/2 1/4 3/4 1/3 2/3 1/5 2/5 3/5 4/5 1/6 5/6 1/7 1/8 3/8 5/8 7/8 1/9
ss01 (Two-storey a)	a á â ã ä å à ā ą ă ã a ă a ^a
ss02 (Two-storey g)	g ĝ ḡ ǧ ȝ ɡ ɡ ^ḡ
ss04 (Serifed I [i])	I J Í Î Ï İ Ì Ï Ñ I Ì I
ss06 (alt. Ampersand)	&
Contextual Alternates	t f ft Ꞥ ꞥ
Graphics	● ○ ■ □ ▲ ► ▼ ◀ ▶ ▽ ◁ ● ○ ■ □ ◆ ◇ ▲ ► ▼ ◀ ▶ ▽ ◁

About foundry

Schrifteria is a type foundry started by Yulia Gonina in 2022. We offer retail and custom typeface design, Cyrillic design, and type-related consulting services including logo design reviews and brand typography advice.

Schrifteria was created with the goal of using design experience and feedback from client projects, customer research, and personal experience to create functional typefaces.

We prioritize user experience in our design rather than design for its own sake.

Contact us

schrifteria.xyz
info@schrifteria.xyz

Copyright © Schrifteria Foundry 2022-2024.

All rights reserved.

For more information about fonts and services please visit our website.